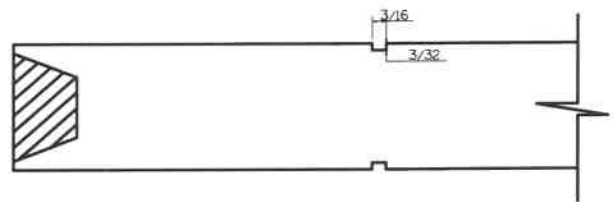


| SE9100              | A  | B     | C         |
|---------------------|----|-------|-----------|
| 4-0<br>THRU<br>2-0  | 5" | 3/16" | VARIABLES |
| 1-10<br>THRU<br>1-4 | 4" | 3/16" | VARIABLES |
| 1-2                 | 3" | 3/16" | VARIABLES |
| 1-0                 | 2" | 3/16" | VARIABLES |



**Timberland**  
CUSTOM DOORS FOR A LIFETIME OF OPENINGS

Detail: STILELINE SE9100

Date: 8/11/22

Customer:

DWG#

By: IMN