



INSTALLATION INSTRUCTIONS

800 HEAVY DUTY BI-FOLD TRACK HARDWARE

Note: Proper door measurement and installations are critical in having the bi-folds correctly fitting the opening.

Note: The correct door size would be 2-3/8" less the height of the opening and 1" less the width for a four door set (four leaves). See **Figure A**. 2-3/8" less the height and 3/4" less the width for a two door set (two leaves).

Note: When Bi-Folds are ordered assembled the pivot pins are pre-drilled and hinges are mounted securely to inside surface doors.

STEP 1

If top and bottom pivot holes are not pre-drilled, drill 3/8" diameter x 1-3/4" deep holes in center of edge 1-1/8" from edge nearest door jamb. See **Figure B**. Note: Holes must be drilled 90 degrees to surface.

PRESS or LIGHTLY tap (compress pin before tapping) pivots into holes with shoulder of nylon sleeve in full contact with surface. Do not hammer on pivot head as this will damage the return spring in nylon sleeve.



STEP 2

Locate door plate as shown in **Figure C**. Secure plate using two (2) quantity #8 x 1 screws. Do not over tighten.

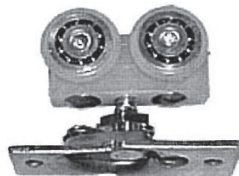
Note: Pre-drilling holes for screws is suggested.

STEP 3

Position the required amount of carriage assemblies and track brackets in track before mounting track to header.

See **Figure D**. Secure track to header with #8 x 1 screws.

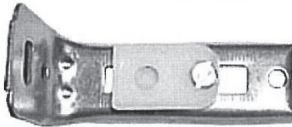
(Roller Carriage & Door Plate)



STEP 4

Locate jamb bracket common to door jambs and floor. Align jamb bracket center with track bracket pivot hole or track centerline. After alignment is obtained secure jamb bracket to jamb and floor with three (3) quantity #6 x 3/4 screws per hardware instructions. Do not over tighten. We suggest using two (2) quantity #6 x 3/4 screws in the jamb and one (1) quantity #8 x 1-1/4" screw with plastic concrete anchor not supplied with hardware.

(Floor Jamb Bracket)



STEP 5

To install doors insert top pivot pin in track bracket pivot hole. Lower doors to allow bottom pivot to engage jamb bracket pivot hole. Insert the adjustment bolt of the carriage assembly into slot of door plate. Make certain adjustment screw is properly seated in door plate. Secure in place by moving the locking latch to the closed position.

STEP 6

Install pulls on lead doors. 6" in from center edge on center lock rail. Note: If using hardware other than the wooden pulls supplied use installation instruction for that hardware.

STEP 7

To align doors loosen screw in jamb bracket and track bracket. Place suitable spacer between doors. Close doors and adjust by turning adjustment bolts as required to properly align doors. Tighten screws in jamb bracket and track bracket. Doors should be raised to the 1/2" from bottom side of track with wrench provided. See **Figure E**.

STEP 8

Center opening only

Lighten secure aligners with two (2) quantity #7 x 3/4 screws. Adjust then tighten.

(Aligner)

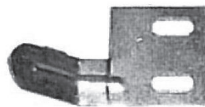


Fig.A

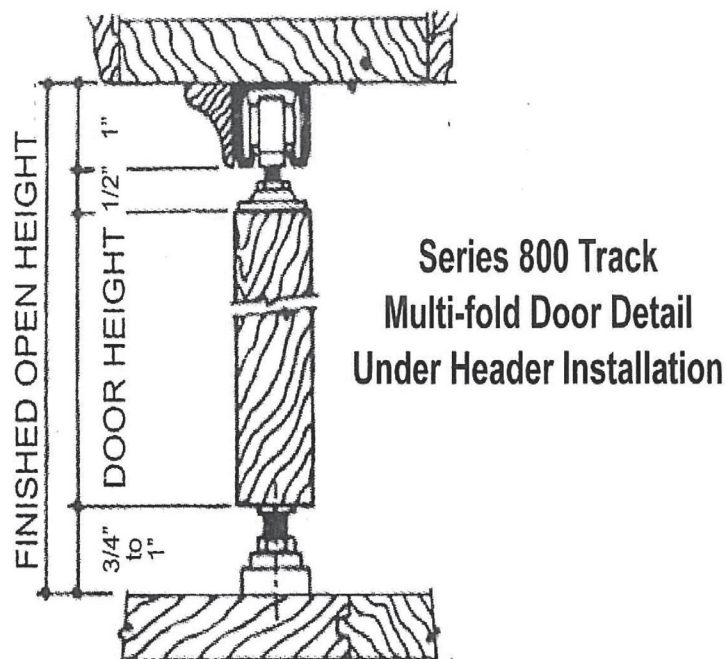
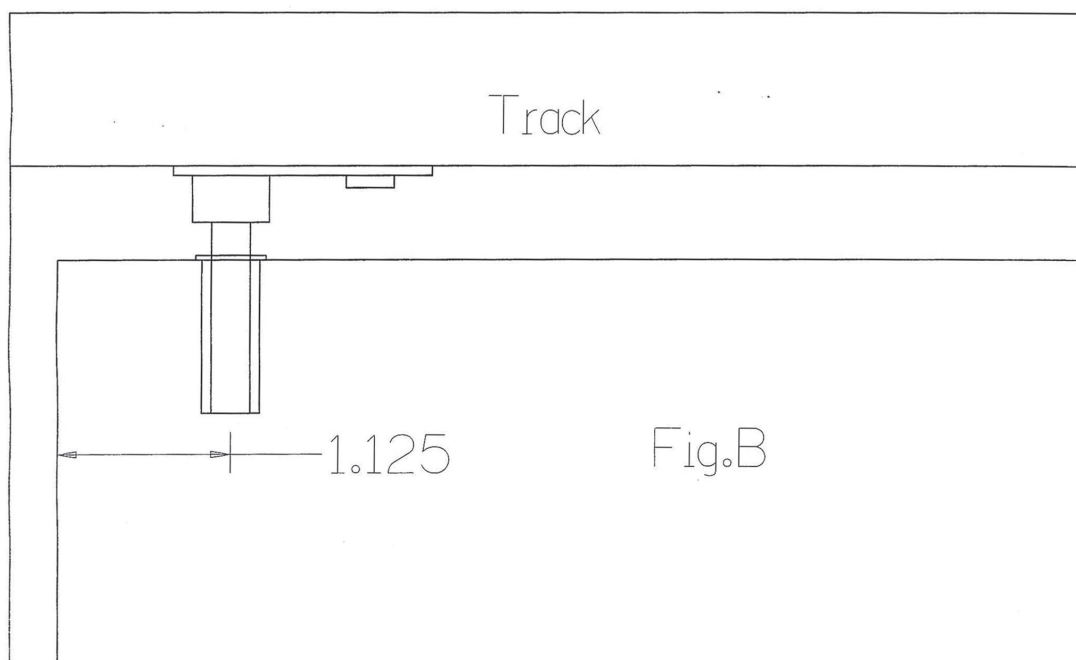


FIGURE A

(Not at Scale)

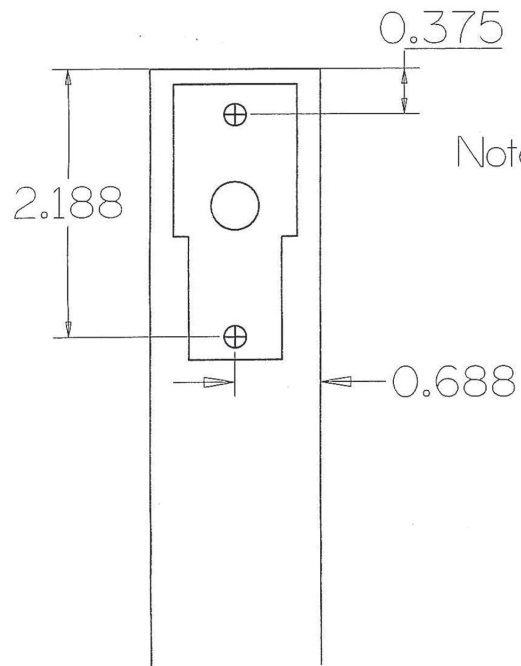
FIGURE B

(Not at Scale)



Door Plate

Fig.C



Note: Pre-drill holes for
door plate and
perfect pin alignment

FIGURE C

(Not at Scale)

FIGURE D

(Not at Scale)

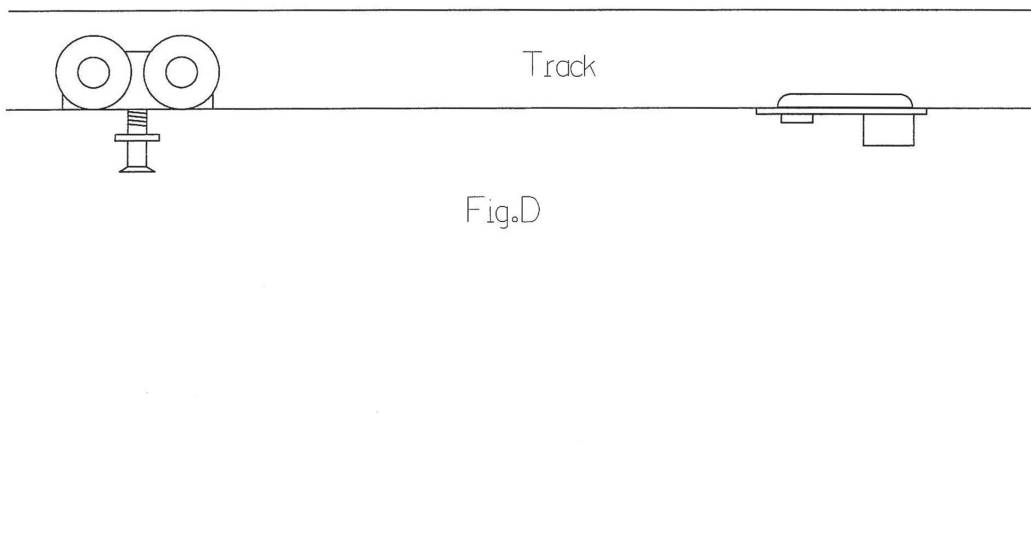
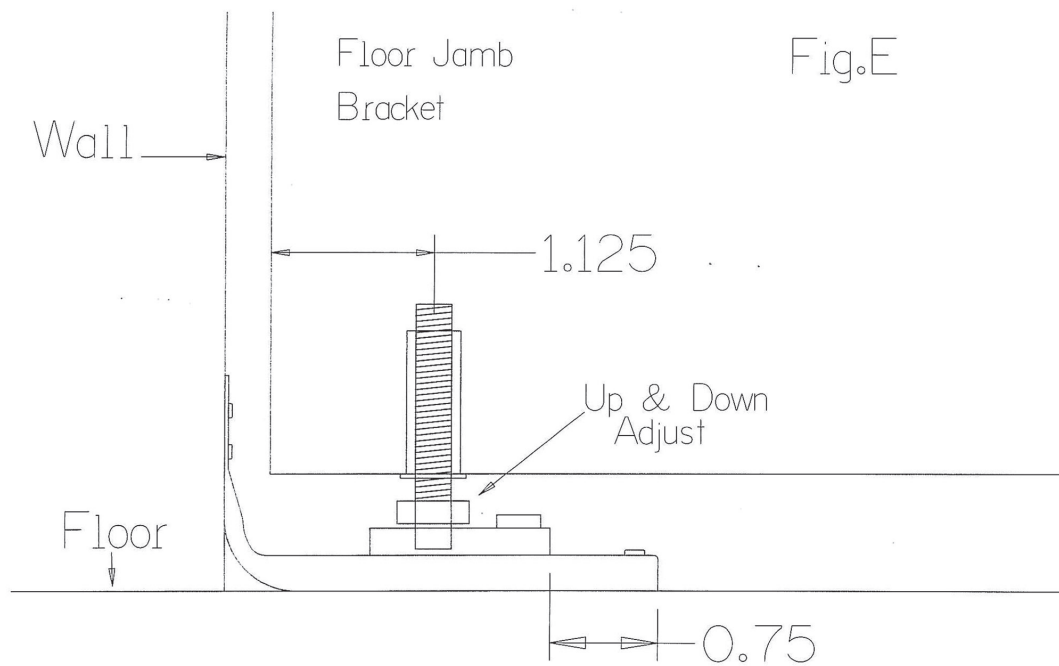


Fig.D



Note: When slide adjust starts at $\frac{3}{4}$ there is minimal adjustment needed.

FIGURE E
(Not at Scale)

