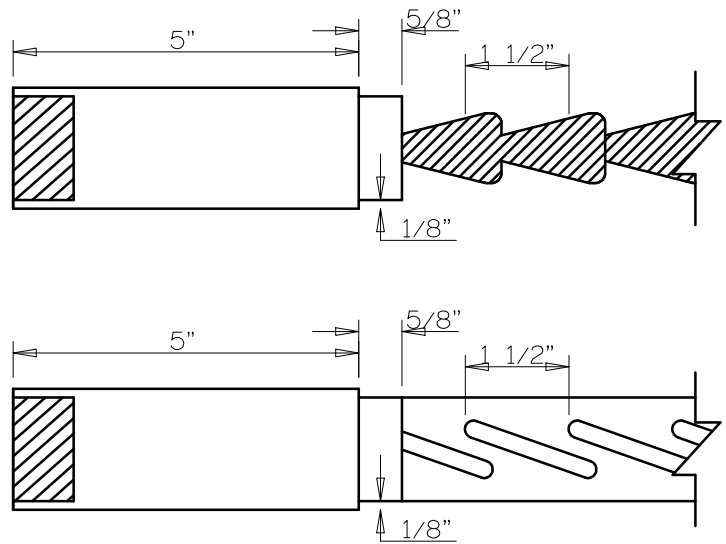


| SL5100              | A  | B  | C  | D  | E      |
|---------------------|----|----|----|----|--------|
| 4-0<br>THRU<br>2-0  | 5" | 5" | 9" | 3" | VARIES |
| 1-10<br>THRU<br>1-4 | 4" | 5" | 9" | 3" | VARIES |
| 1-2                 | 3" | 5" | 9" | 3" | VARIES |
| 1-0                 | 2" | 5" | 9" | 3" | VARIES |



**Timberland**  
**CUSTOM DOORS FOR A LIFETIME OF OPENINGS**

Detail: STILELINE SL5100 2IN LVR

Date: 5/9/19

Customer:

DWG#

By: C J B